



Hawkeye 25Live Interface

June 24, 2017

Version 1.3

15605 NE 91st St
Vancouver, WA 98682

360-600-9305

ted@hawkeyetech.com
hawkeyetech.com

Table of Contents

I.	Introduction	2
II.	Installation	2
III.	Settings	3
IV.	Lower Buttons	5
V.	Manual Reservations	6
VI.	Readers	7
VII.	Lockdown.....	8
VIII.	Logs.....	10
IX.	XML Viewer	11

Introduction

Our 25Live Interface downloads your 25Live event calendar, including things like classes, meetings and special events. It keeps only the associated doors unlocked during the scheduled events, and locks them again after the events have concluded. Canceled events are automatically removed from the unlock queue and certain event types like "maintenance" can be configured to be ignored by the interface.

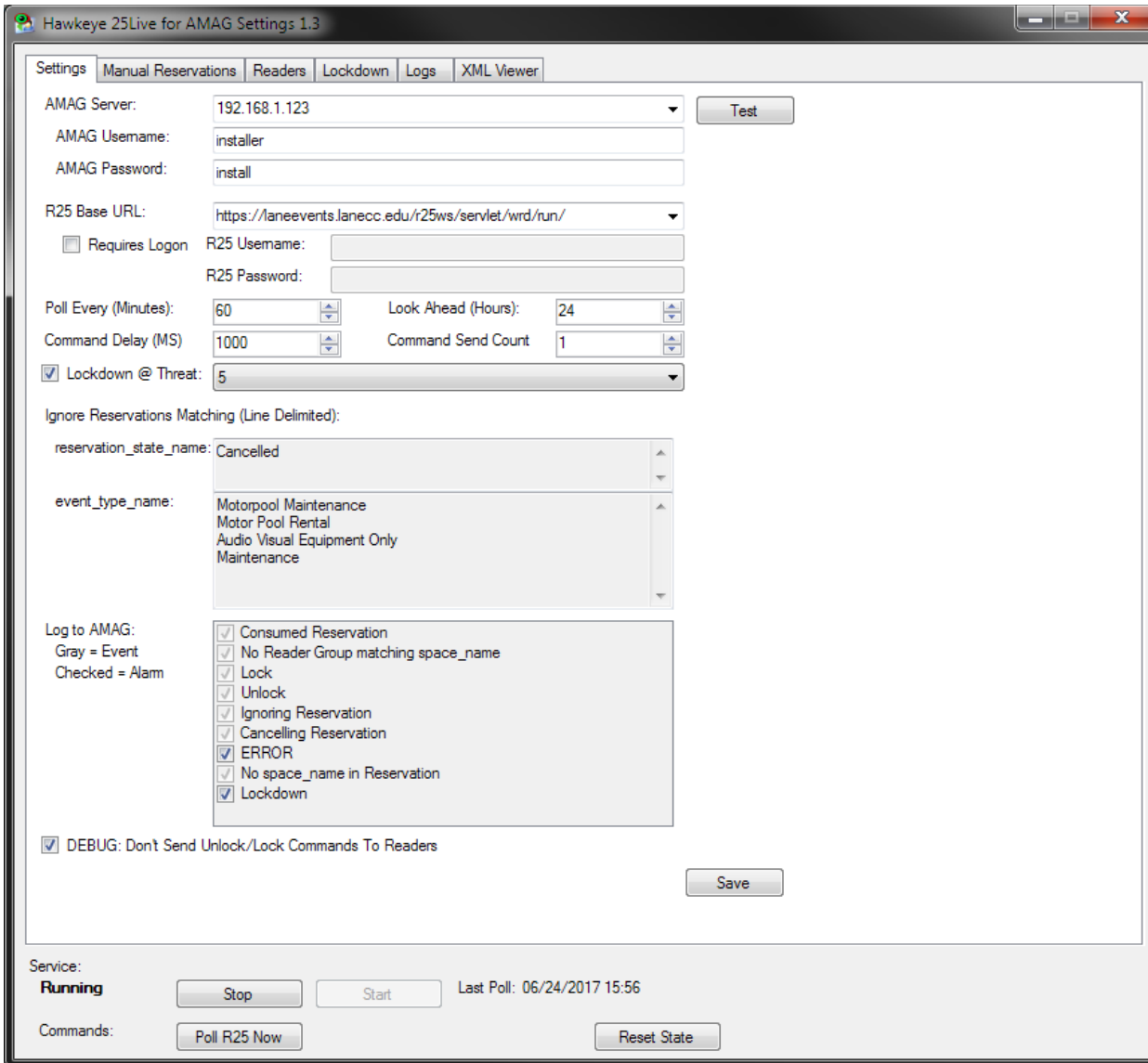
A "Lockdown" feature can be invoked that locks all doors the interface currently has open in the case of emergencies. After the emergency, Lockdown is disabled and all scheduled doors unlock and operations continue as normal. Lockdown is based on Reader Groups, so Lockdown could be site-wide if the Reader Group contains all readers, or specific areas can be controlled by creating individual Reader Groups for each area needing lockdown capability.

Installation

Run the setup executable on the SMS Host and follow the prompts. The setup package will install the 25Live Windows service, settings app, and separate Lockdown app.

Note: The AMAG XML Developer's Kit is required.

Settings



- **AMAG Server:** This will normally be the local computer name. SQL and XML requests are sent to this server.
- **AMAG Username/Password:** The credentials used to authenticate with XML. Click Test to test your credentials against the AMAG server.
- **R25 Base URL:** This defaults to the collegenet test service. Use the dropdown, or type the location of your R25 service location. After changing servers, the Reset State button must be used to transition to the new server. This is detailed below in the Reset State section.

- **Requires Logon/Username/Password:** Check this if your R25 service requires basic authentication.
- **Poll Every (Minutes):** How often to poll the R25 service for new reservations.
- **Look Ahead (Hours):** How many future hours to download from R25 into your reader schedule. For instance, if this is set to 4 hours, then all reservations occurring in the next 4 hours will be downloaded. There is a tradeoff between compensating for possible R25 service downtime (as in, your R25 service becomes unavailable and new reservations are unable to be downloaded) and how flexible the Hawkeye R25 interface is in adapting to possible property changes of future reservations. Once a reservation is downloaded, changes to properties such as space_reservation and start and stop times will not be re-downloaded into Hawkeye R25. In this regard, the downloaded reservation must be cancelled using your R25 scheduling system and recreated using the new values.
- **Lockdown @ Threat:** Performs a Lockdown to all configured Lockdown groups when the AMAG Threat Level reaches the threshold. The Lockdown is ended when the Threat Level returns to below the threshold.
- **Ignore: reservation_state_name/event_type_name:** Reservations matching these properties will not be downloaded into your reader schedule.
- **Log to AMAG:** Which events to log to AMAG.
- **DEBUG: Don't Send Unlock/Lock Commands To Readers:** This is checked by default for safety reasons. Your reader schedule will be processed and commands will be logged to AMAG if they were sent, but commands will not actually be sent to readers. Uncheck after observing that the system is behaving as expected. After unchecking, the state must be reset in order for past simulated reader commands to actually be sent out.
- **Save:** Click Save to commit changes to the registry.

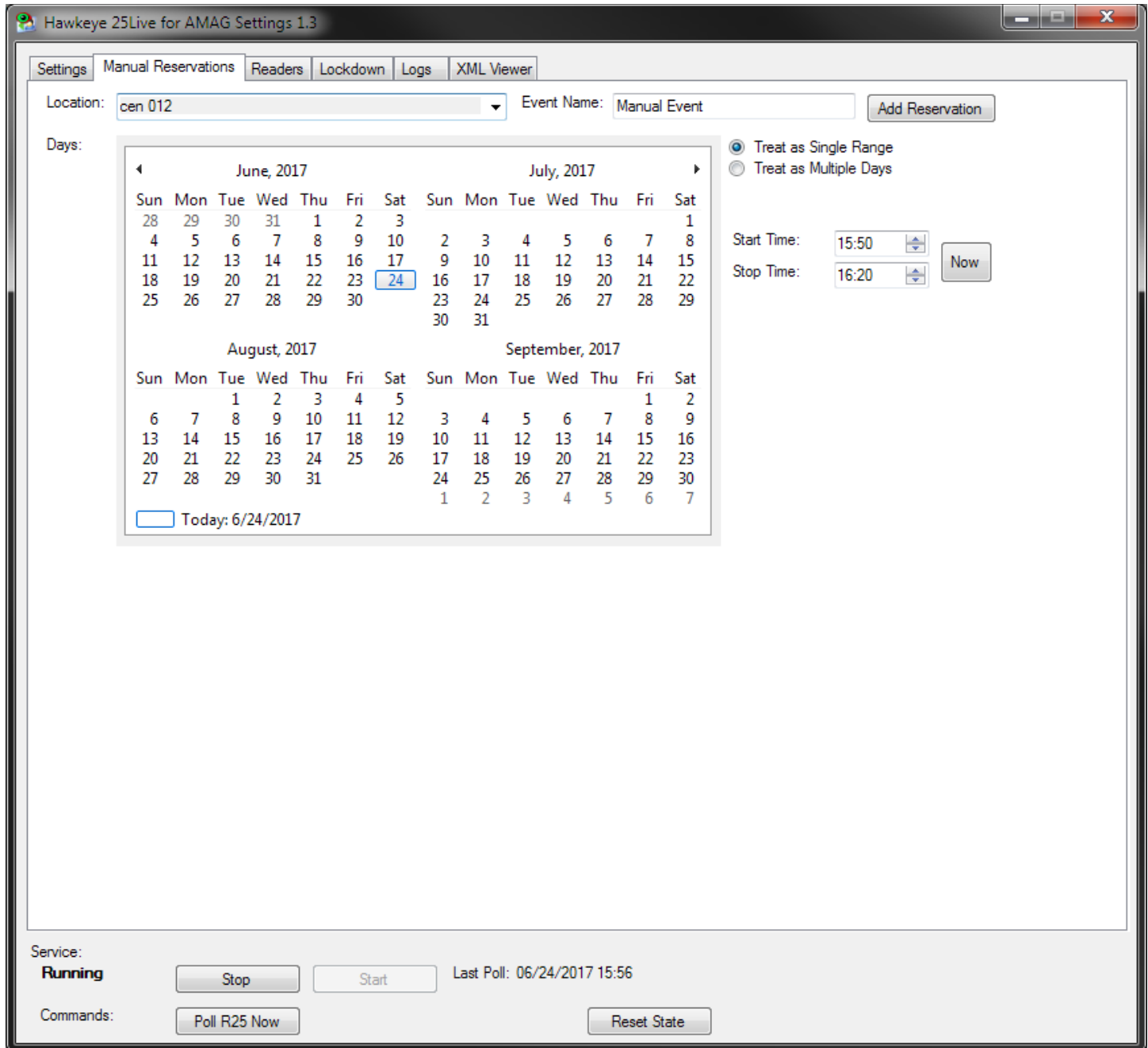
Lower Buttons

- **Service Stop/Start.** Schedule downloads and reader commands are controlled by a Windows service running in the background. Use these buttons to control the running state of the service.

Commands

- **Poll R25 Now:** Perform an immediate R25 poll.
- **Reset State:** After changing certain critical options like R25 Base URL and DEBUG: Don't send unlock/lock commands to readers, the state must be reset. The state includes things like your reader schedule and the states of those readers.

Manual Reservations



Reservations are normally handled by your R25 scheduling system. Reservations can also be added manually here. Select the Location/reader group, give it a name, select the date range and time, and click Add Reservation.

Readers

Hawkeye 25Live for AMAG Settings 1.3

Settings Manual Reservations **Readers** Lockdown Logs XML Viewer

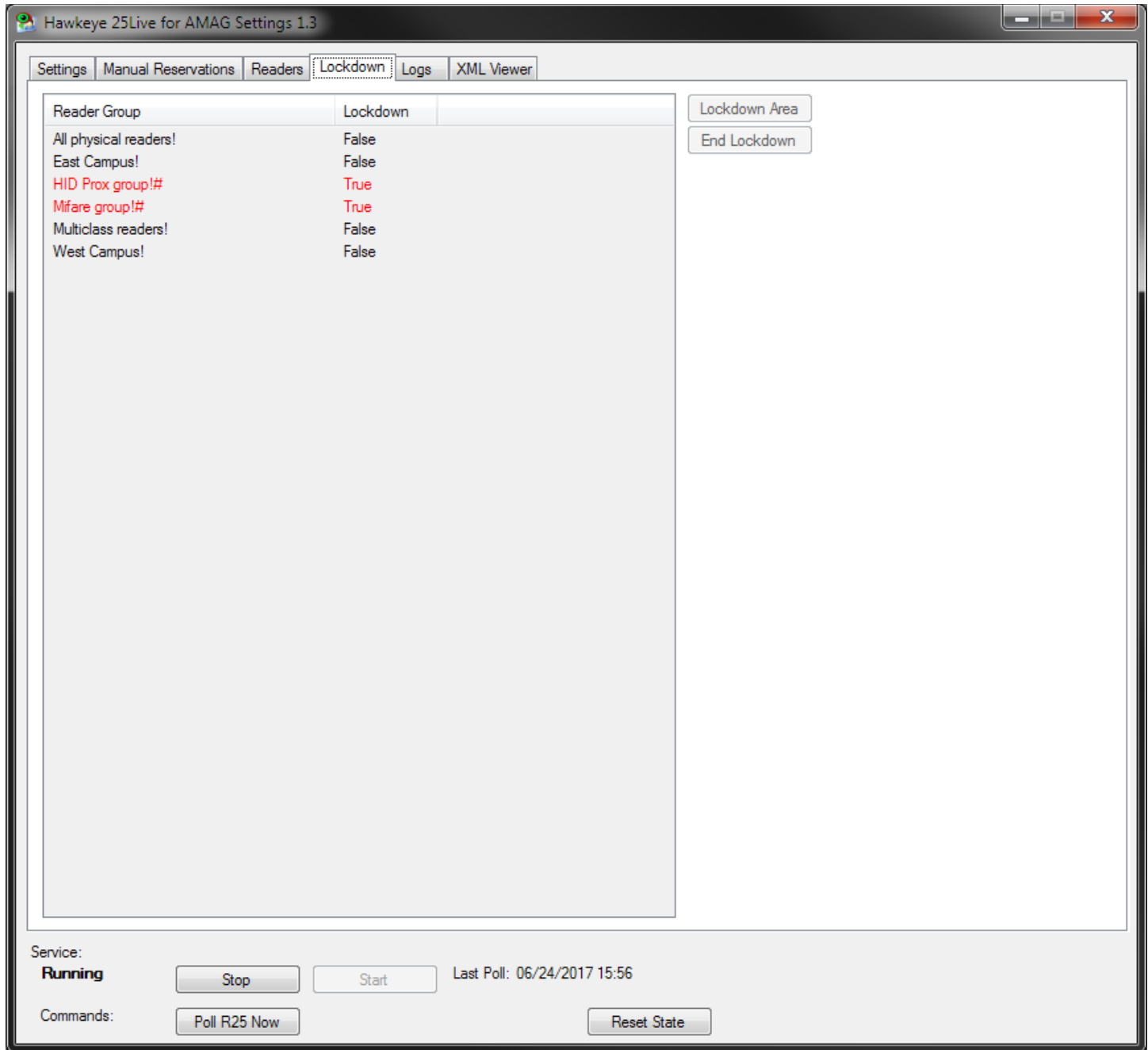
Reader	Status	Unlock	Lock	event_name	space_name	reservation
Mifare	Locked	01/01/0001 00:00	12/31/9999 23:59	LOCKDOWN		0
HID Prox	Locked	01/01/0001 00:00	12/31/9999 23:59	LOCKDOWN		0
Multiclass 1	Unlocked	06/24/2017 15:35	06/24/2017 16:35	Manual Event (Manual-4)	cen 012	-4

Service: **Running** [Stop] [Start] Last Poll: 06/24/2017 15:56

Commands: [Poll R25 Now] [Reset State]

This tab shows your current reader schedule. Reservations can be cancelled manually by selecting a reader and clicking the red X.

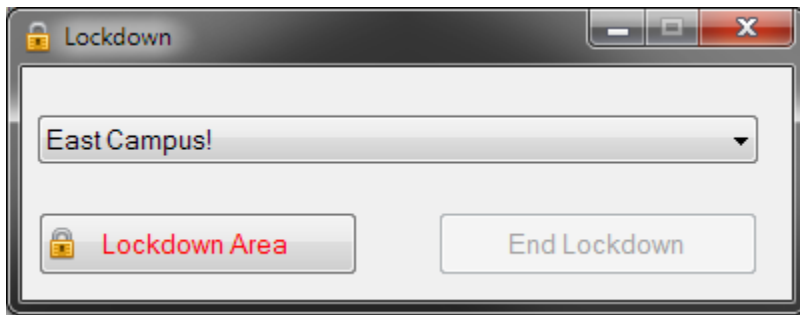
Lockdown



This tab shows the lockdown areas and their current lockdown status.

Lockdown areas are Reader Groups defined in Symmetry, with an exclamation point (!) appended to their description. A pound sign (#) indicates that the area is currently in lockdown.

Lockdown app



A separate Lockdown app can be run for quick access to the Lockdown feature. The app can be run on the Symmetry server or from a remote client (for instance, by creating a shortcut to the executable file over a network share).

If run from a separate client, the AMAGServer value needs to be set in the Windows registry on the client computer.

Key: HKEY_LOCAL_MACHINE\SOFTWARE\Wow6432Node\Hawkeye Technologies\AMAG Addons\Hawkeye 25Live Interface for AMAG\Settings

Setting: AMAGServer

Value: Name or IP address of your Symmetry server

Logs

The screenshot shows the 'Hawkeye 25Live for AMAG Settings 1.3' application window. The 'Logs' tab is active, displaying a list of log files on the left and their corresponding event details on the right. The log files listed include dates from 2012-09-17 to 2017-06-24. The selected log file, '2017-06-24.log', shows a series of events starting with 'Service started' and 'Start poll' at 15:56 on 06/24/2017. The log includes several 'Set Lock' messages for different classes (Multiclass 1, HID Prox, Mifare, Multiclass 2) and 'Lock' messages for these same classes. It also contains numerous 'New Reservation' messages with event names and reservation IDs, such as 'Aslcc Osa Transition Meeting Vehicles' (ID: 8400342), 'Vehicle Out Of General Service' (ID: 8117692), 'Xhd 0901 K50 Mmp 44533' (ID: 8489117), 'Xhd 0901 K91 Mmp 44532' (ID: 8489134), 'Cja 100 01 Mmp 44016' (ID: 8436540), 'Lcso Sheriff's Reserve Academy' (ID: 8502165), and 'Flex Studios' (ID: 8343031). The log ends with 'No Reader Group matching space_name' messages for several of these reservations. At the bottom of the window, the service status is 'Running', with 'Stop' and 'Start' buttons. The 'Last Poll' time is 06/24/2017 15:56. There are also 'Poll R25 Now' and 'Reset State' buttons.

Verbose logs are saved to disk. Click a log file to load.

XML Viewer

event_end_dt	event_id	event_locator	event_name	event_start_dt	event_title	event_type_cl...	event_type_n...	expected_count	href	las
6/24/2017 4:30...	252236	2016-AAOJDK	Vehicle Out O...	6/24/2017			Motor Pool Re...	1	reservation.x...	12/
6/25/2017 4:30...	252236	2016-AAOJDK	Vehicle Out O...	6/25/2017			Motor Pool Re...	1	reservation.x...	12/
12/31/2017 5:0...	254311	2017-AAOMFF	Motor Pool A ...	1/27/2017 8:0...			Motor Pool Re...	1	reservation.x...	1/2
6/24/2017 9:00...	258628	2017-AAOSPG	Emerald Valle...	6/24/2017 8:0...	AKC Urban tr...		Training - Exte...	20	reservation.x...	4/1
6/25/2017 9:00...	258628	2017-AAOSPG	Emerald Valle...	6/25/2017 8:0...	AKC Urban tr...		Training - Exte...	20	reservation.x...	4/1
6/24/2017 9:00...	260362	2017-AAOVDY	Flex Studios	6/24/2017 6:0...			Performances	500	reservation.x...	5/5
6/25/2017 5:00...	260363	2017-AAOVDZ	Flex Studios	6/25/2017 2:0...			Performances	500	reservation.x...	5/5
6/24/2017 4:00...	260886	2017-AAOVYC	Dhs Orientatio...	6/24/2017 1:0...	DHS Orientati...		Training - Exte...	15	reservation.x...	6/1
6/24/2017 5:00...	261057	2017-AAOWER	Confederated ...	6/24/2017 12:...	Baby Shower ...		Meeting - Ext...	20	reservation.x...	5/3
6/25/2017 4:30...	261079	2017-AAOWFN	Having Our S...	6/25/2017 2:0...			Meeting - C...	150	reservation.x...	6/1
6/24/2017 7:30...	261362	2017-AAOWQK	Asloc Osa Tra...	6/23/2017 8:0...	ASLCC OSA t...		Motor Pool Re...	3	reservation.x...	6/1
6/24/2017 10:0...	261466	2017-AAOWUK	Anita Sanford	6/24/2017 8:0...			Rehearsal	20	reservation.x...	6/1
6/24/2017 5:50...	252087	2016-AAOIXR	Cja 100 01 M...	6/24/2017 9:0...	Intro to Crimin...		Sections	25	reservation.x...	6/2
6/24/2017 6:00...	255311	2017-AAONRR	Xhd 0901 K50 ...	6/24/2017 7:0...	Motorcycle B...		Sections	75	reservation.x...	6/2
6/25/2017 6:00...	255311	2017-AAONRR	Xhd 0901 K50 ...	6/25/2017 7:0...	Motorcycle B...		Sections	75	reservation.x...	6/2
6/24/2017 6:00...	255312	2017-AAONRS	Xhd 0901 K91 ...	6/24/2017 7:0...	Motorcycle B...		Sections	50	reservation.x...	6/2
6/25/2017 6:00...	255312	2017-AAONRS	Xhd 0901 K91 ...	6/25/2017 7:0...	Motorcycle B...		Sections	50	reservation.x...	6/2
6/24/2017 6:00...	261665	2017-AAOXC	Loso Sheriff's ...	6/24/2017 9:0...			Class	1	reservation.x...	6/2

Missing space_reservation Met Ignore Criteria

Service: **Running** Last Poll: 06/24/2017 15:56

Commands:

This contains the results of the last R25 poll. It can be used for debugging purposes.